

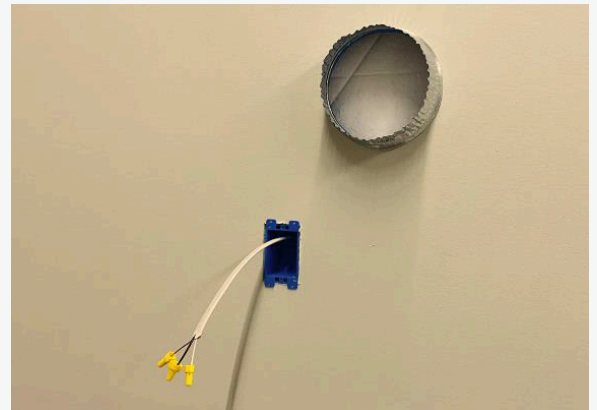
## Step 1:

Find a friend and safely remove your CopperHoods range hood and vent from the crate. Promptly inspect the hood for damages and faults immediately after unboxing, and report any concerns to CopperHoods before installation.



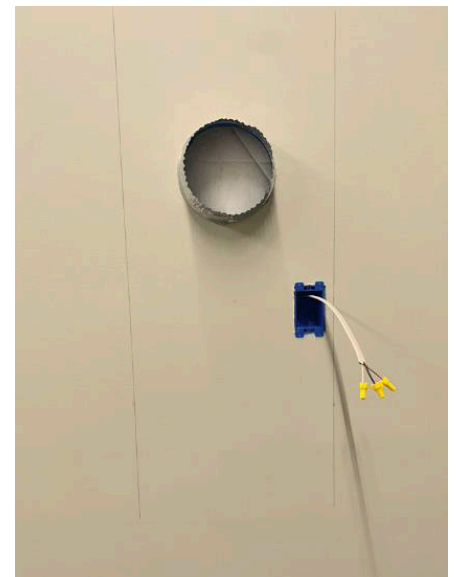
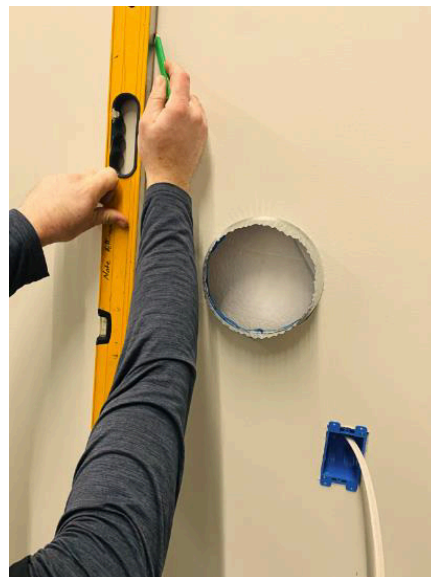
## Step 2:

Go to the point of installation. Locate the duct vent and electrical. You must install a new single-gang box for your CopperHoods range hood. We recommend placing it 8" above and 12" right from the bottom center of the desired hood placement.



## Step 3:

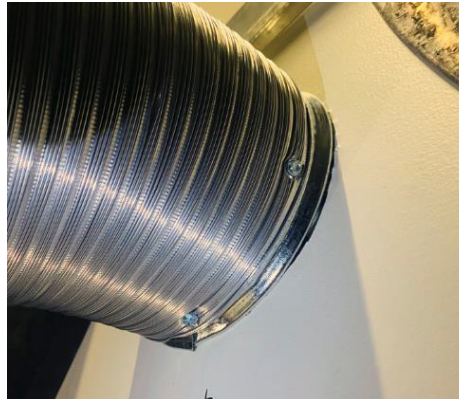
Using a stud finder, locate studs to secure your CopperHoods range hood. After you find the studs, use a level to mark them vertically. Now you've marked the location to secure the hood to the wall.



## Step 4:

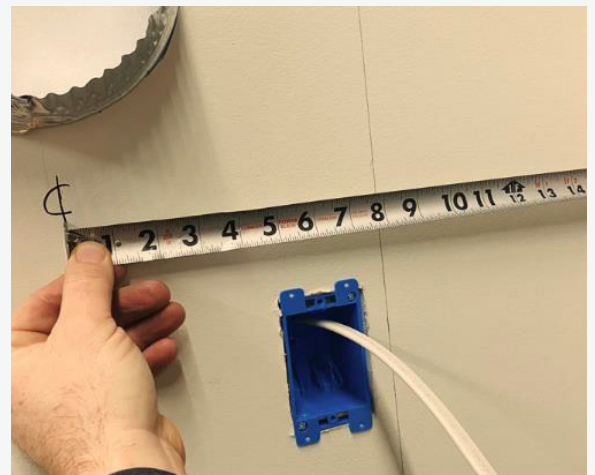
We always recommend a semi-rigid flex duct if it's available in your area (shown here). If rigid piping is a must, you will need to remove the blower from inside the insert, fasten the duct to the start collar with tape or screws and remount the blower.

Install semi-rigid flex piping onto the duct located on the wall and secure it with 1/4" self-tapping screws. We suggest four screws evenly placed around the duct. To ensure a tight seal, wrap the piping duct with foil-backing tape.



## Step 5:

From the center of the duct, measure the distance to both studs located on the left and right side of the duct (note these measurements as they will be needed when marking the studs' location on the hood).



## Step 6:

On the rear of your CopperHoods range hood, measure the width of the top and bottom of the hood and mark the center.



## Step 7:

Using the noted measurements from STEP 5, measure the appropriate distances from the left and right of the center and mark locations. (Ex. Stud locations = 8" left and 8" right. On the hood, measure 8" from the center to the left and right and mark locations).



## Step 8:

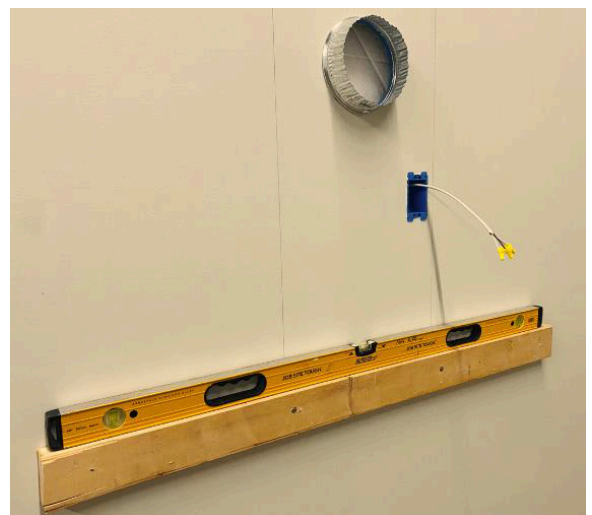
Remove the steel bars unless used as secondary support. Once the stud locations are located on the hood, pre-drill holes (suggested minimum of four mounting screw holes).



## Step 9:

Next, you'll add a support cleat if your wall is unfinished. Are you using a floor jack or another method to hold the hood in place during installation? Skip this step.

Find a 2"x4" that's the width of the bottom portion of the hood. The 2"x4" will be used as the cleat to support the hood during installation. Before mounting the 2"x4", mark where the bottom of the hood will reside. Next, mount the 2"x4" on the mark for the bottom of the hood and ensure it's level.



## Step 10:

Since the hood is heavy, we suggest two people lift it and place it on the cleat board. Lift the hood into place and rest the bottom on the cleat board. Continue to have one person hold the hood to support while the other person installs the mounting screws.



## Step 11:

With the hood in place, ensure your new CopperHoods range hood is centered. Install at least four screws into the pre-drill holes. As mentioned in STEP 8, only use the steel bars for added support—remove them otherwise.



## Step 12:

For the blower unit install, locate the plastic damper and install it onto the vent of the unit using 1/4" self-tapping screws. Follow the Trade Wind recommendations for damper placement based on vertical or horizontal duct runs.



### Step 13:

Place the blower unit below the hood and temporary support in place to allow ease of electrical and duct hookups.

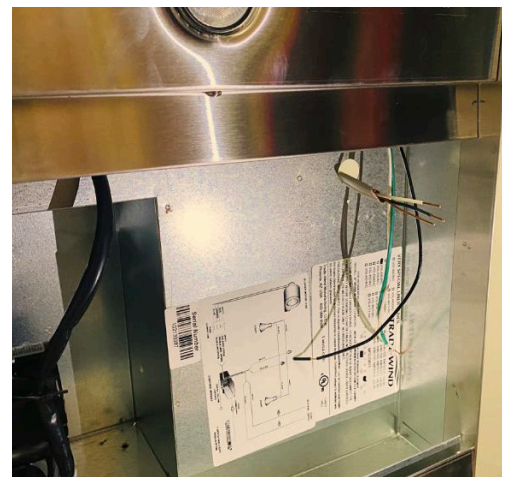
### Step 14:

Remove the junction box located underneath the blower unit.



### Step 15:

Pull the wires from the wall through the pre-drilled hole and into the blower unit.



### Step 16:

Connect wires from the blower unit to the home wire using the appropriate electrical connectors.



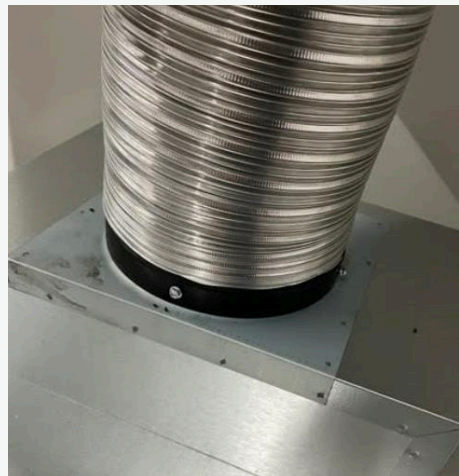
## Step 17:

Re-install the junction box.



## Step 18:

Connect the duct work to the plastic damper on the blower unit using 1/4" self-tapping screws. (suggested four screws evenly placed around the duct). **To ensure a tight seal, wrap the pipe duct with foil-backing tape.**



## Step 19:

Lift the blower unit into place and hold it flush with the bottom of the hood. Using four 5/8" self-tapping screws, secure the unit to the hood. (Make sure to mount screws above the guides that hold the steel air vents in place)



## Step 20:

Install the air vents and centerpiece onto the blower unit.



## Finishing Touches:

Clean up with a mild dish detergent.

