

Island Range Hood Installation Guide:

This comprehensive guide covers the complete installation process for CopperHoods.com island-mounted range hood systems, including the attachment of the hood vent via ½-inch threaded rods connected to u-channel supports in the ceiling and the installation of a new blower motor in the attic with external ducting.



Tools and Materials Needed:

- Template material (plywood or cardboard)
- Drill with appropriate bits
- ½-inch threaded rods
- U-channel supports
- 2x6 lumber for bracing
- Pipe strapping
- Self-tapping sheet metal screws
- Washers and nuts
- Flexible ducting
- Wire nuts and electrical supplies
- Scaffolding or sturdy platform
- Laser level (recommended)

Step 1: Create Installation Template

Create a precise template of the hood vent's top surface that includes:

- Locations of the four mounting bolt holes
- HVAC duct opening position
- Reference marks for proper alignment

Important: Ensure the ducting path is clear of ceiling trusses and positioned within the hood vent's perimeter to avoid interference during installation.



Step 2: Mark and Drill Mounting Holes

Using your template as a guide, carefully mark and drill the four bolt holes into the ceiling at the hood vent location. Double-check measurements before drilling to ensure proper alignment.



Step 3: Install Ceiling Support Structure

Install 2x6 lumber bracing across multiple truss beams to:

- Distribute the weight of the hood and motor assembly
- Create a stable platform for the blower motor
- Provide secure mounting points for the u-channel supports

Position the u-channel perpendicular to the hood vent orientation and secure it to the 2x6 bracing.



Step 4: Center and Secure Threaded Rods

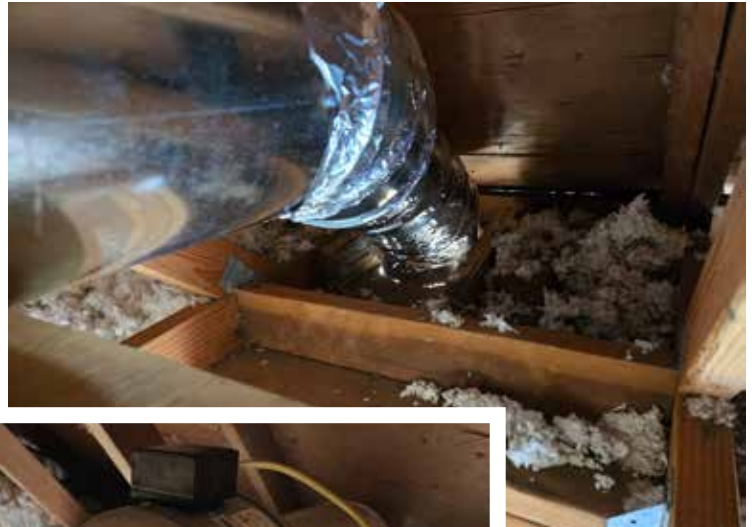
1. Use a laser level to determine the exact center position for the island hood relative to your template
2. Insert the ½-inch threaded rods through the u-channel
3. Secure each rod with bolts above and below the channel to prevent rotation during final installation
4. Mark the rods at the drywall line for reference
5. Cut rods to length, allowing 1 inch below the hood vent bottom for washers and securing nuts



Step 5: Install Exhaust System

Run ducting through the attic from the hood location to the exterior exhaust point. Mount the blower motor on the platform created above the truss beams, ensuring:

- Proper alignment with the hood vent opening
- Secure mounting to prevent vibration
- Clear path for exhaust flow



Step 6: Secure Exhaust Components

Use pipe strapping to secure all exhaust system components, including:

- Silencer unit
- Elbows and transition pieces
- Main exhaust run to exterior

This prevents movement and reduces noise during operation.



Step 7: Complete Electrical Installation

Run electrical wiring separately from the motor location and breaker box to a junction box positioned above the hood vent location. Ensure all electrical work complies with local building codes.



Step 8: Pre-Drywall Inspection

Before installing drywall, verify that these components extend properly through the ceiling:

- Four threaded support rods
- Electrical junction box
- Exhaust duct with damper (install damper as the final ducting component)



Step 9: Mount the Hood Vent

Safety Note: This is a three-person operation requiring two people to support the hood while a third person secures the mounting hardware.

1. Attach flexible ducting to the damper before lifting the hood into position
2. Set up scaffolding to position the hood close to final height before lifting
3. Carefully raise the hood and align with the threaded rods
4. Secure with washers and nuts, ensuring adequate clearance around the ducting connection



Step 10: Install the Insert Unit

1. Position the insert on a stable platform just below the hood opening
2. Connect both ducting and electrical connections to the insert
3. Test motor and lighting operation before final installation
4. Use scaffolding to safely position the insert for mounting



Step 11: Secure the Insert

Attach the insert to the hood vent using self-tapping sheet metal screws. Ensure the insert is:

- Properly leveled
- Positioned above the hood vent rim
- Securely fastened at all mounting points



Step 12: Final Installation

Complete the installation by installing the grease filters and conducting a final operational test of all systems.



Safety Reminders

- Always follow local building codes and permit requirements
- Ensure proper electrical connections and grounding
- Test all systems before completing the installation
- Consider professional installation for electrical and structural modifications

This installation requires advanced DIY skills and may benefit from professional assistance, particularly for electrical work and structural modifications.